



# GAT MONTHLY MEMBERSHIP PROGRESS REPORT

Results as of: 6/30/2023

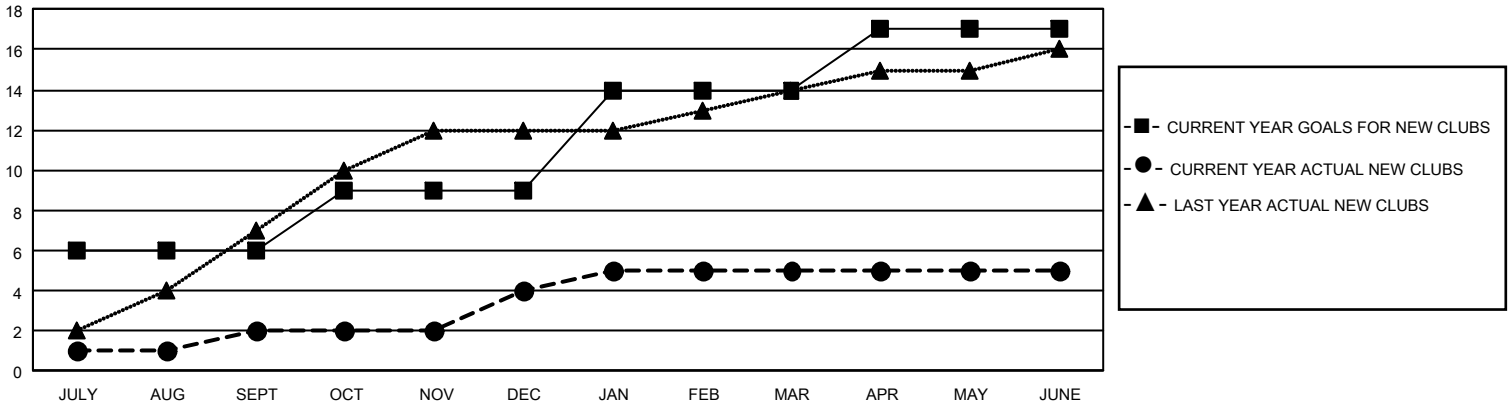
## GMT Constitutional Area 5 - K, Group L

REPORT DOES NOT INCLUDE CLUBS IN UNDISTRICTED AREAS.

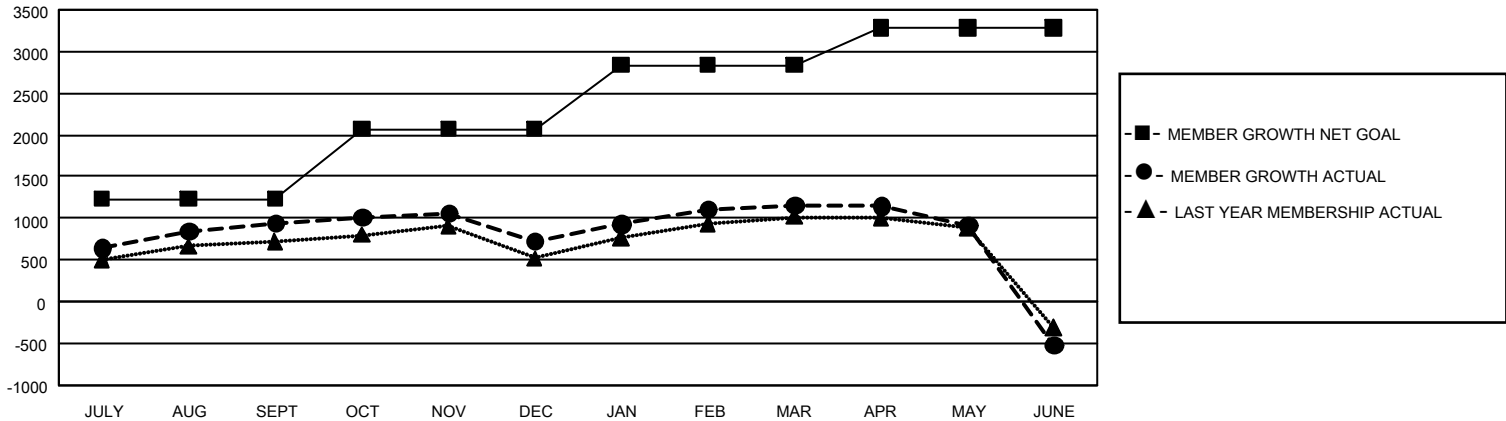
Clubs			
RESULTS FOR 2022-2023			
QUARTER	NEW CLUB GOAL	NEW CLUBS	DROPPED CLUBS
JULY/AUG/SEPT	18	2	4
OCT/NOV/DEC	9	2	2
JAN/FEB/MAR	15	1	2
APR/MAY/JUNE	9	0	6

Members			
RESULTS FOR 2022-2023			
QUARTER	MEMBER GROWTH NET GOAL	MEMBER GROWTH ACTUAL	DROPPED MEMBERS ACTUAL (including transfers)
JULY/AUG/SEPT	1230	1,770	745
OCT/NOV/DEC	840	727	931
JAN/FEB/MAR	765	1,013	531
APR/MAY/JUNE	450	474	2,094

GOALS AND ACTUAL NEW CLUBS CUMULATIVE



GOALS AND ACTUAL MEMBERS CUMULATIVE



<b>DROPPED CLUBS: 14</b>	531 CLUBS OF 622 ADDED 1 OR MORE NEW MEMBERS	<b>GENDER DISTRIBUTION</b>	
		MALE 17,847 (74.96%) FEMALE 5,962 (25.04%) NON BINARY 0 (0.00%) PREFER NOT TO ANSWER 0 (0.00%)	
<b>DROPPED MEMBERS</b>		<a href="#">CLICK HERE FOR CUMULATIVE MEMBERSHIP DATA</a>	TOTAL FAMILY UNIT MEMBERS 829
DECEASED 104 CLUB CANCELLED 79 OTHER 4,118 <b>TOTAL 4,301</b>			FAMILY MEMBERS PAYING HALF DUES 468